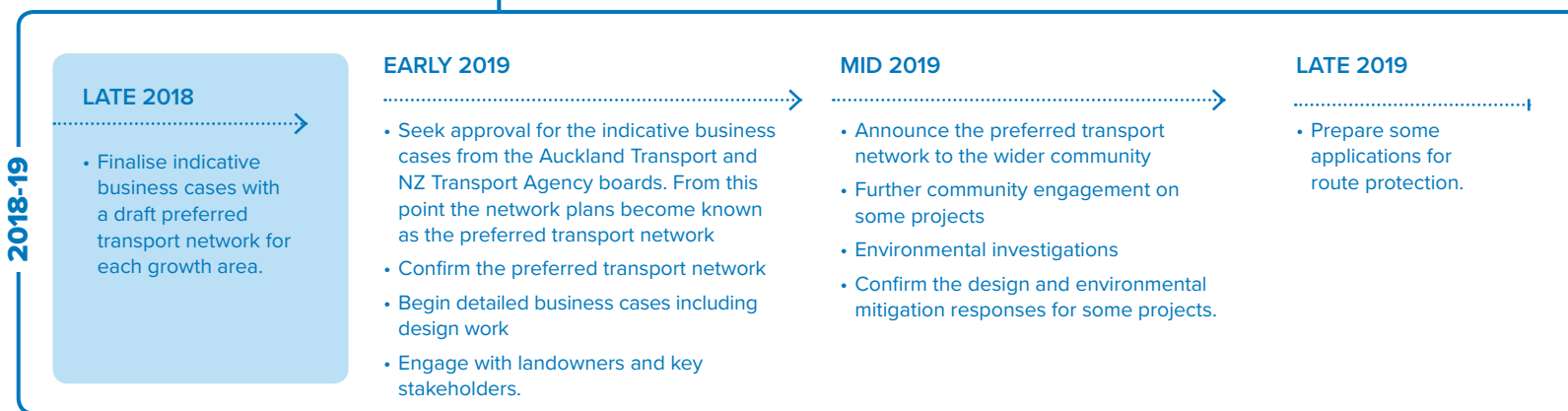
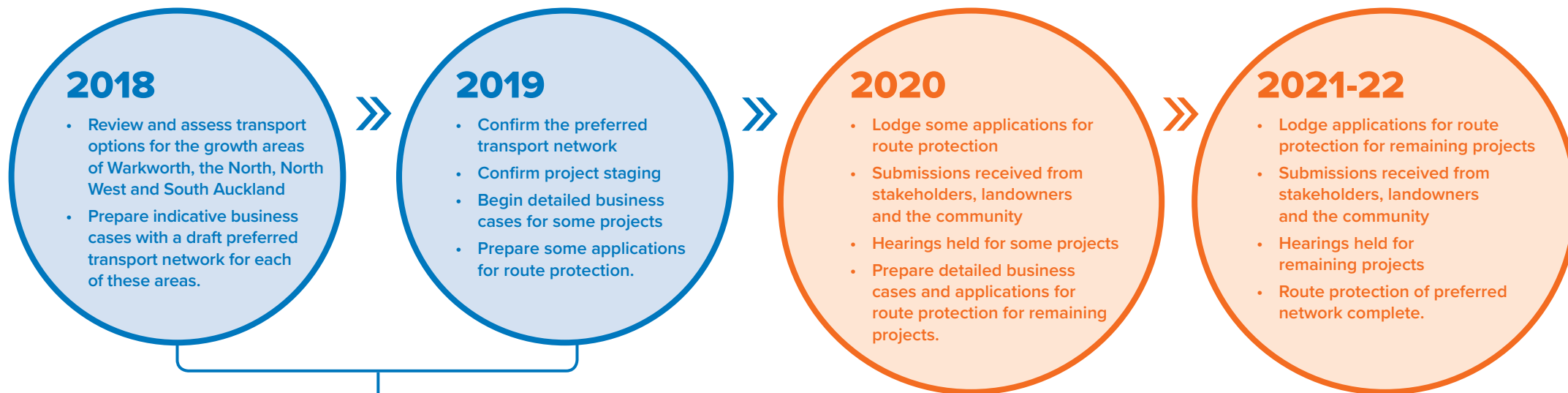


THE NEXT FIVE YEARS: STEPS TO ROUTE PROTECTION

Route protection is a planning process that enables land to be protected for future construction of necessary infrastructure such as transport. It provides certainty to landowners and developers about where essential infrastructure will be in the future.



WHAT HAPPENS AFTER 2022?

This programme is focused on protecting the preferred network within five years. Construction will be timed to align with Auckland Council's release of land suitable for urban development in 10, 20 and 30 years' time.

FUNDING

As well as public funding, a range of other innovative funding sources including housing funds and development contributions will be investigated to fund this significant investment in Auckland's future.