

THE GROWTH STORY

WARKWORTH

Warkworth is expected to grow to a substantial satellite town over the next three decades with 1000 hectares of land identified for future urban growth. With a lot more people (about five times the current population) living in the area and new employment areas providing new jobs, this means significant new transport infrastructure will be needed.

Transport aspirations for Warkworth

In 2016 you told us your aspirations for the future of Warkworth's transport network:

- Warkworth to expand as a successful satellite town that is less car dependent
- Residents to have transport choices, with good walking and cycling facilities and frequent, reliable public transport

A high level preferred transport network plan was then published in 2016 to meet these aspirations and guide further stages of planning.

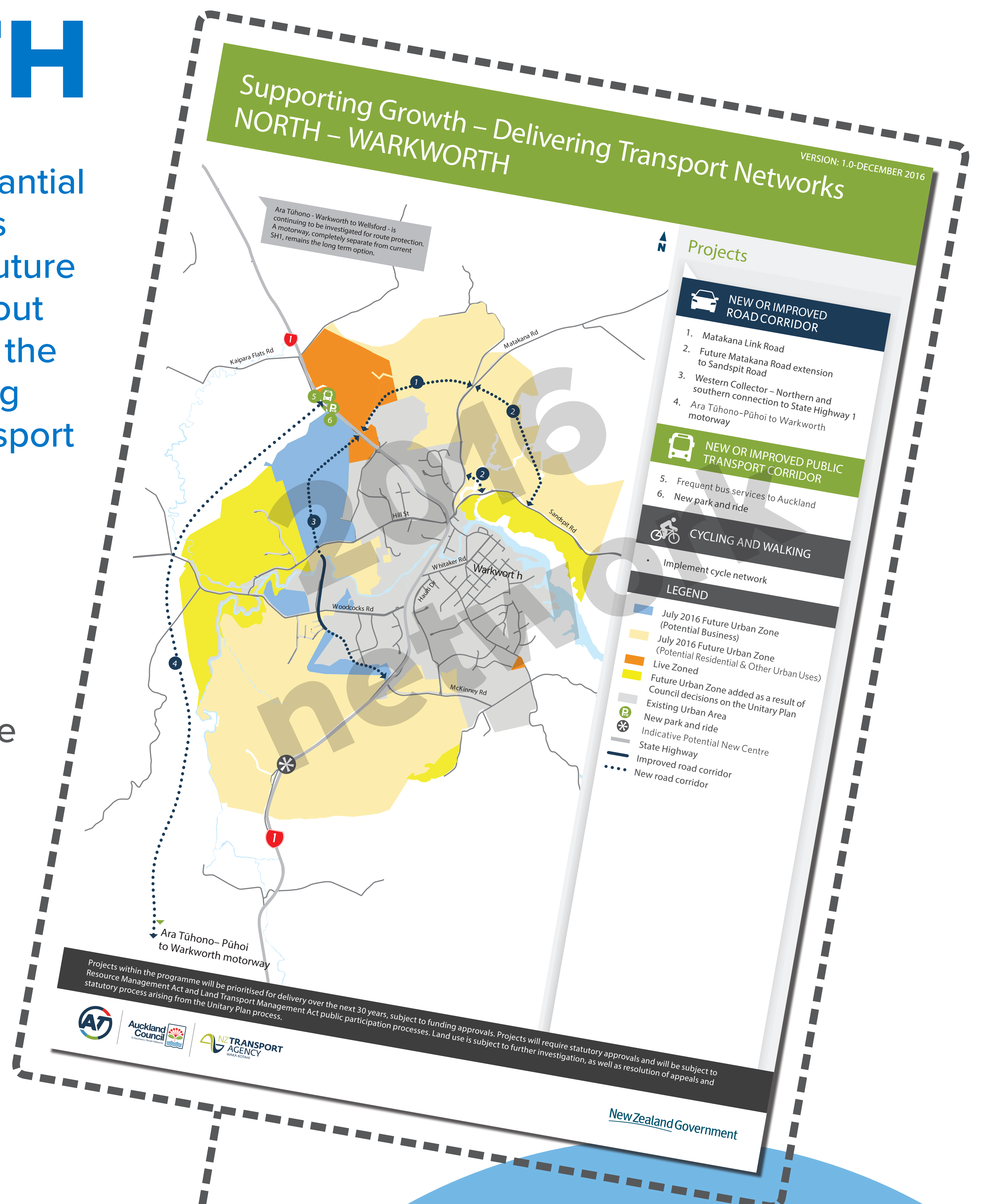
Since then...

WARKWORTH STRUCTURE PLAN HAS STARTED

This Auckland Council-led planning process will set the land use vision for Warkworth's future urban areas. Consultation with the community is underway to identify land use constraints and opportunities.

EARLY TRANSPORT PROJECTS UNDERWAY

- Ara Tūhono - Pūhoi to Warkworth (construction)
- Ara Tūhono - Warkworth to Wellsford (route protection)
- Matakana Link Road (route protection)
- Hill Street Intersection (business case)



WHAT NEXT?

As a result of these changes, we have confirmed and refined the 2016 Preferred Network and now have some new options we'd like your feedback on:

- WALKING AND CYCLING
- PUBLIC TRANSPORT
- WESTERN LINKS
- EASTERN LINKS
- URBANISING THE TRANSPORT NETWORK
- KEY STATE HIGHWAY IMPROVEMENTS