

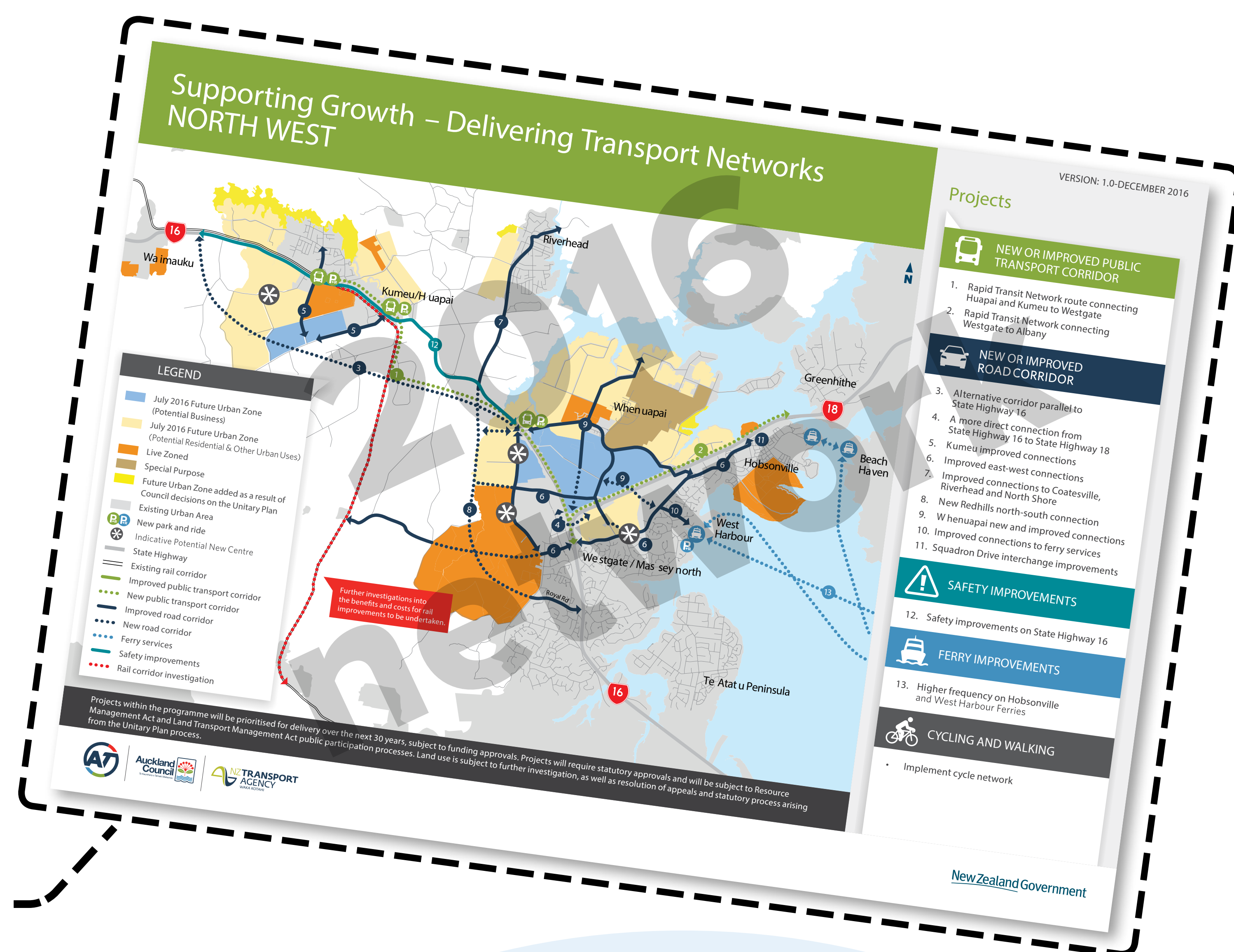
# THE GROWTH STORY: NORTH WEST

Auckland's North West is growing and is expected to more than triple in population over the next three decades. Most of the growth will occur initially in Redhills and Whenuapai, and from 2028 in Kumeū-Huapai and Riverhead. In total, these areas are anticipated to be home to at least 75,000 more people and 25,000 new jobs by 2046. Such a significant increase in homes and employment requires equally significant planning and investment in new transport infrastructure.

## In 2016, you told us your aspirations for the North West:

- Increase transport choice
- Separate shorter distance trips from longer distance trips
- Provide efficient freight connections to employment areas
- Improve the resilience of the network
- Improve access to education, employment and recreation opportunities in the area.

A high level preferred transport network plan was then published in 2016 to meet these aspirations and guide further stages of planning.



## What has changed since...

### Future Urban Land Supply Strategy (Update) 2017

This update forecast an additional 8,000 households and 2,400 additional jobs and changed the timing for the Kumeū-Huapai future growth area to the late 2020s.

### Redhills Precinct 'Live-Zoned'

600 hectares live-zoned for Residential and Local Centre under the Auckland Unitary Plan (Operative in Part).

### Whenuapai Structure Plan (adopted)

Provides the planning framework for 1500 hectares of land providing an anticipated 8,100-10,700 dwellings and 8,600 jobs.

### Whenuapai Plan Change 5

Process to live-zone 351 hectares of Whenuapai South into a mix of residential and business zones is underway.

### Early Transport Projects

- SH16/18 Connections (investigation)
- Safe Roads SH16 Brigham Creek to Waimauku (investigation)
- Huapai Triangle Improvements (design and consenting).

## What next?

As a result of these changes, we have confirmed and refined the 2016 Preferred Network and now have some new options that we would like your feedback on:

- STRATEGIC CONNECTIONS
- PUBLIC TRANSPORT
- WALKING AND CYCLING
- NEW AND UPGRADED ARTERIAL CONNECTIONS (URBAN AND RURAL)